



Catalog Number	
Project	Type

Features & Specifications

Application

Great for commercial applications. Provides soft, balanced illumination for a contemporary appearance and comfortable light environment.

Features

Attractive 2x2 or 2x4 direct/indirect fluorescent fixture with side-mounted lamps and extremely fine fit and finish. No visible light source or apparent glare. Perforated baffle and curved reflector produce a combination of direct and indirect light. Baffle release with retractable pins for fast re-lamping and maintenance.

Construction

Housing is constructed of structurally embossed, heavy gauge, cold rolled steel. Standard troffer mounting for easy installation in T-bar ceilings. Available with a white perforated metal basket with white opal acrylic diffuser.

Electrical System

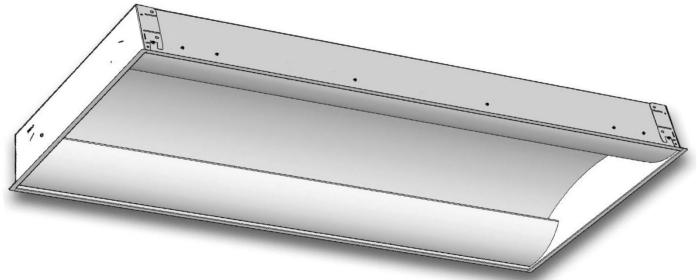
ETL listed. Suitable for damp locations. Damp location emergency pack must be specified separately. Ballasts are solid-state electronic. Ballasts and lamp holders are replaceable without removing from ceiling. Discrete voltage must be specified for emergency pack options when wired with flex.

Finish

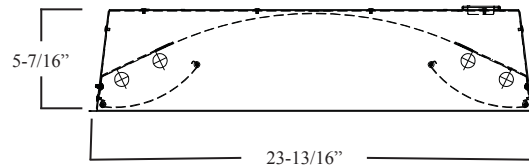
All reflective surfaces are finished with a high reflectance, lighting fixture white polyester powder.

RSDI SERIES

SIDE DIRECT/INDIRECT LAY-IN FIXTURE



DIMENSIONS



Please contact your Horizon Sales Representative for more information.
All dimensions subject to change without notice.

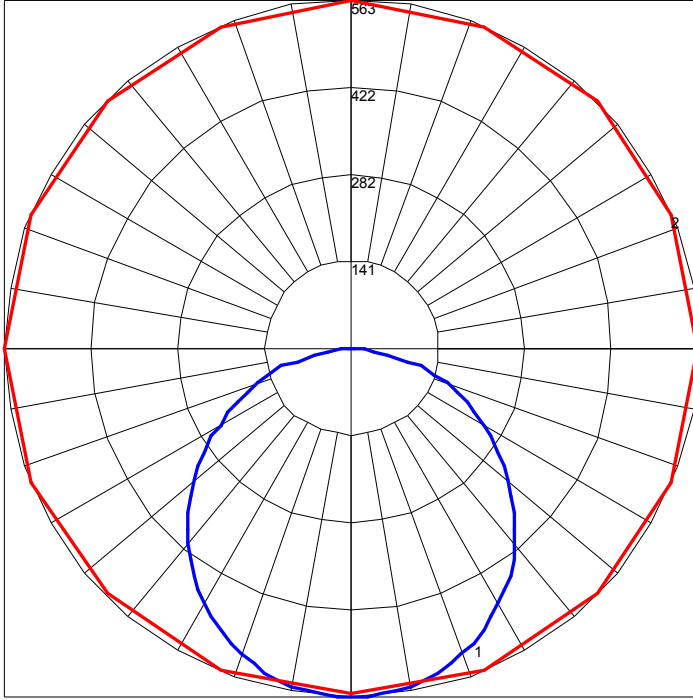
Ordering Nomenclature

Ex: (2X4 Side Direct/Indirect Lay-In, 2 Lamps, F32T8, Multi-Volt = RSDI2232D)

--	--	--	--	--	--	--

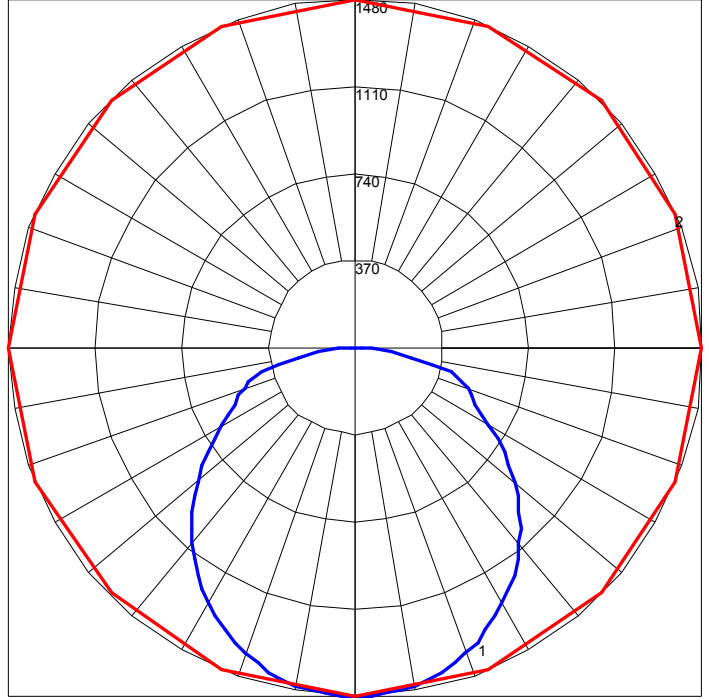
SERIES	NUMBER OF LAMPS	WATTAGE/TYPE	BAFFLE	VOLTAGE	BALLAST FACTOR	OPTIONS
RSDI2 2X4 RSDI22 2X2	2 4	2X2 17 - 17W T8, 24" 24 - 24W, T5HO, 24" 25 - 25W T8, 24" CF39* - 39W TT5, 24" CF40* - 40W TT5, 24" CF50* - 50W TT5, 24" CF55* - 55W TT5, 24" 2X4 28T8 - 28W T8, 48" 28T5 - 28W T5, 46" 30 - 30W T8, 48" 32 - 32W T8, 48" 48HO - 60W 800mA, 48" 54 - F54T5HO, 46" *TT lamps available in only in two lamp configuration	BLANK - Perforated White	D - Multi-Volt 1 - 120V 2 - 277V 3 - 347V 4 - 480V *Multi-Volt is 120/277V	BLANK - Normal H - High L - Low	10RS - ≤10% THD, Rapid Start P - Program Start 20 - ≤20% THD EB5 - 500 Lumen T8 Emergency Ballast EB7 - 700 Lumen T8 Emergency Ballast EB14 - 1400 Lumen T8 Emergency Ballast EB30 - 3000 Lumen T8 Emergency Ballast EB5T5 - 500 Lumen T5 Emergency Ballast EB7T5 - 700 Lumen T5 Emergency Ballast EB14T5 - 1400 Lumen T5 Emergency Ballast FBF - Fast-Blow Fuse SBF - Slow-Blow Fuse AC63 - 6', 3/8" dia., Armored Flex Cable SJ6 - 6', 3/8" dia., 16/3 SJ Cord SJ10 - 10', 3/8" dia., 16/3 SJ Cord SJ15 - 15', 3/8" dia., 16/3 SJ Cord PWO - Palletized without Cartons CD - Continuous Dimming (T8) SD - Step Dimming (T8) CD5 - Continuous Dimming (T5) SD5 - Step Dimming (T5) FK22 - 2x2 Flange Kit FK24 - 2x4 Flange Kit

POLAR GRAPH



Maximum Candela = 563 Located At Horizontal Angle = 22.5, Vertical Angle = 2.5
1 - Vertical Plane Through Horizontal Angles (22.5 - 202.5) (Through Max. Cd.)
2 - Horizontal Cone Through Vertical Angle (2.5) (Through Max. Cd.)

POLAR GRAPH



Maximum Candela = 1480 Located At Horizontal Angle = 22.5, Vertical Angle = 2.5
1 - Vertical Plane Through Horizontal Angles (22.5 - 202.5) (Through Max. Cd.)
2 - Horizontal Cone Through Vertical Angle (2.5) (Through Max. Cd.)