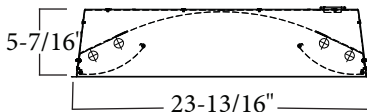
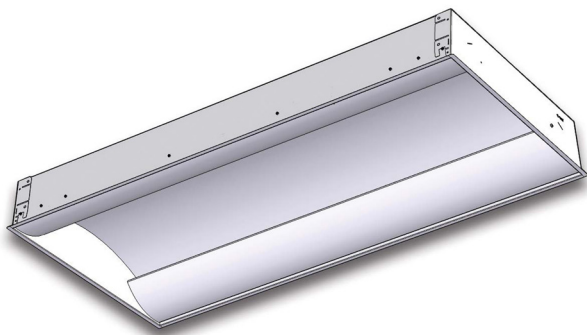


RSDI SERIES

Side Lamp Direct / Indirect





DESIGN

The RSDI Series Side Lamp Direct / Indirect fixture is designed for recessed ceiling mounting for direct/indirect lighting applications where aesthetics and performance are both required. It provides soft, balanced illumination. The contemporary styling makes it appropriate for offices or other architectural applications.

ACCESSORIES

Order as separate line item

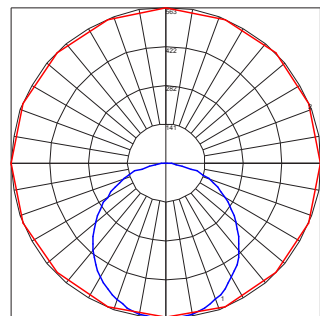
 **6' 16/3 CORD W/ 15A NEMA PLUG**
 C1 (120V)
 C2 (277V)
 C4 (480V)

 **T8 EMERGENCY BALLAST**
 EB5 (500 LUMEN)
 EB7 (700 LUMEN)
 EB14 (1400 LUMEN)
 EB30 (3000 LUMEN)

 **MOTION SENSOR**
 WOC (120/277V)
 WOC1 (347/480V)

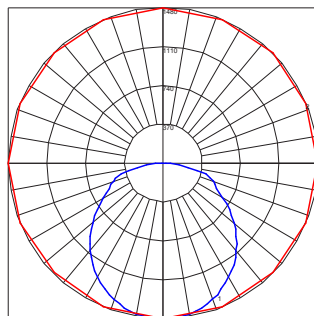
PHOTOMETRICS

IES INDOOR REPORT
 PHOTOMETRIC FILENAME: RSDI2224.IES
 POLAR GRAPH



Maximum Candela = 563 Located At Horizontal Angle = 22.5, Vertical Angle = 2.5
 #1 - Vertical Plane Through Horizontal Angles (22.5 - 202.5) (Through Max. Cd.)
 #2 - Horizontal Cone Through Vertical Angle (2.5) (Through Max. Cd.)

IES INDOOR REPORT
 PHOTOMETRIC FILENAME: RSDI254.IES
 POLAR GRAPH



Maximum Candela = 1480 Located At Horizontal Angle = 22.5, Vertical Angle = 2.5
 #1 - Vertical Plane Through Horizontal Angles (22.5 - 202.5) (Through Max. Cd.)
 #2 - Horizontal Cone Through Vertical Angle (2.5) (Through Max. Cd.)

ORDERING INFORMATION

Description	Part Number
2X2 2L 17W T8 120/277V	RSDI22217D(A)
2X2 2L 24W T5HO 120/277V	RSDI22224D(A)
2X2 4L 17W T8 120/277V	RSDI22417D(A)
2X2 4L 24W T5HO 120/277V	RSDI22424D(A)
2X4 2L 32W T8 120/277V	RSDI2232D(A)
2X4 2L 54W T5HO 120/277V	RSDI2254D(A)
2X4 4L 32W T8 120/277V	RSDI2432D(A)
2X4 4L 54W T5HO 120/277V	RSDI2454D(A)

Option Codes

(A) Options
 Blank - None
 10RS - ≤10% THD, Rapid Start
 P - Program Start
 20 - ≤20% THD

All part numbers shown here include white perforated baskets.

MOUNTING

 **FLANGE KIT**
 FK14 (1x4)
 FK22 (2x2)
 FK24 (2x4)

TECHNICAL INFORMATION

Housing is constructed of structurally embossed, heavy gauge, cold rolled steel. Available with either ribbed acrylic diffusers or perforated baskets. Wire way covers snap in for easy attachment and removal. ETL listed. Suitable for damp locations. Ballasts are solid state electronic. All reflective surfaces are finished with a high reflectance, lighting fixture white polyester powder.