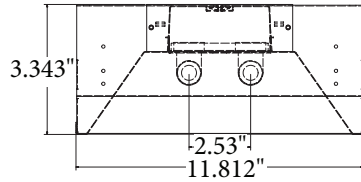
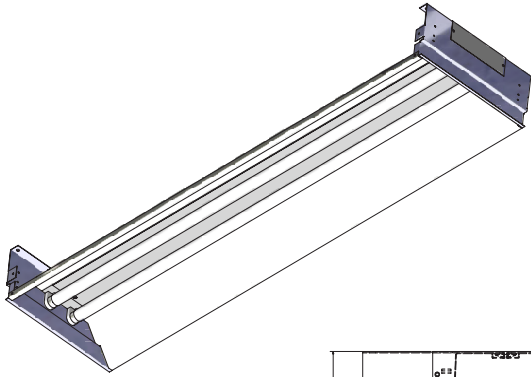


RS SERIES

Recessed Strip



DESIGN

The RS Series Recessed Strip is designed for general purpose applications. It is an excellent choice for commercial, industrial, or retail applications such as storage/utility areas, shops, task and general lighting where a recessed light fixture is required.


ORDERING INFORMATION

Description	Part Number
2L 28W T8 120/277V	RS228T8D(A)
2L 28W T5 120/277V	RS228T5D(A)
2L 32W T8 120/277V	RS232D(A)
2L 54W T5 120/277V	RS254D(A)
2L 86W T8HO 120/277V	RS296HOD(A)
2L TANDEM 28W T8 120/277V	RST228T8D(A)
2L TANDEM ¹ 28W T5 120/277V	RST228T5D(A)
2L TANDEM ¹ 32W T8 120/277V	RST232D(A)
2L TANDEM ¹ 54W T5HO 120/277V	RST254D(A)


STRIPS

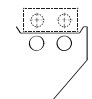
ACCESSORIES

Order as separate line item


 6' 16/3 CORD W/ 15A NEMA PLUG
C1 (120V)
C2 (277V)
C4 (480V)

 WIRE GUARD
SWG2 (2')
SWG3 (3')
SWG4 (4')

 T8 EMERGENCY BALLAST
EB5 (500 LUMEN)
EB7 (700 LUMEN)
EB14 (1400 LUMEN)
EB30 (3000 LUMEN)

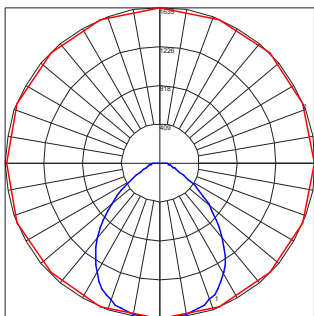
 ASSYMETRICAL REFLECTOR
AR2 (2')
AR3 (3')
AR4 (4')

 MOTION SENSOR
WOC (120/277V)
WOC1 (347/480V)

 WIRING HARNESS
WH34 (3 WIRE, 4')
WH44 (4 WIRE, 4')
WH54 (5 WIRE, 4')

PHOTOMETRICS

IES INDOOR REPORT
PHOTOMETRIC FILENAME: RS232.IES
POLAR GRAPH



Maximum Candela = 1635 Located At Horizontal Angle = 45, Vertical Angle = 2.5
1 - Vertical Plane Through Horizontal Angles 145 - 225 (Through Max. Cd.)
2 - Horizontal Plane Through Vertical Angle (2.5) (Through Max. Cd.)

TECHNICAL INFORMATION

Fixture housing, lamp holder brackets, end sections, and channel cover are constructed of heavy gauge die-formed steel. Designed for installation into 1' x 4' and 1' x 8' T-grid ceilings. ETL listed. Suitable for damp locations. Ballasts are solid state electronic. Ballasts and lamp holders are replaceable without removing from ceiling. All reflective surfaces are finished with a high reflectance, lighting fixture white polyester powder.

Notes: 1-The number of lamps referred to in the description is the number of lamps per cross section. There are two cross sections in a tandem fixture.