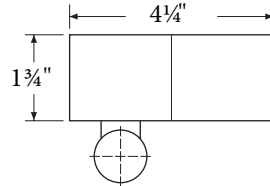


1LST SERIES

One Lamp Staggered Strip



All Dimensions are subject to change without notice

DESIGN

The 1LST Series One Lamp Staggered Strip is designed to maintain a uniform distribution of light and eliminate dark spots between lamps. It was made specifically for coves or display cases where lighting is installed as a continuous run from end to end.

ORDERING INFORMATION

Description	Part Number
1L 14W T5 120/277V	1LST11424D (A)
1L 17W T8 120/277V	1LST11724D (A)
1L 21W T5 120/277V	1LST12136D (A)
1L 24W T5HO 120/277V	1LST12424D (A)
1L 25W T8 120/277V	1LST12536D (A)
1L 28W T5 120/277V	1LST128T524D (A)
1L 32W T8 120/277V	1LST13248D (A)
1L 39W T5HO 120/277V	1LST13936D (A)
1L 54W T5HO 120/277V	1LST15448D (A)

Option Codes

- (A) Options
 Blank - None
 10RS - ≤10% THD, Rapid Start
 P - Program Start
 20 - ≤20% THD

MOUNTING

2 Sets of each mount must be ordered per fixture



(3)S HOOKS AND
CHAIN SET
10JC



AIRCRAFT CABLE WITH
12" ARMS
G10 (10')
G12 (12')
G15 (15')

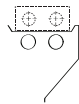
STRIPS

ACCESSORIES

Order as separate line item



6' 16/3 CORD W/ 15A
NEMA PLUG
C1 (120V)
C2 (277V)
C4 (480V)



ASSYMETRICAL
REFLECTOR
AR2 (2')
AR3 (3')
AR4 (4')



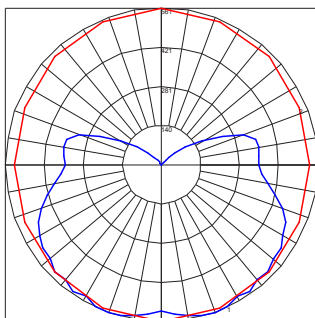
T8 EMERGENCY BALLAST
EB5 (500 LUMEN)
EB7 (700 LUMEN)
EB14 (1400 LUMEN)
EB30 (3000 LUMEN)



WIRING HARNESS
WH34 (3 WIRE, 4')
WH44 (4 WIRE, 4')
WH54 (5 WIRE, 4')

PHOTOMETRICS

IES INDOOR REPORT
PHOTOMETRIC FILENAME : 1LST132.IES
POLAR GRAPH



Maximum Candela = 561 Located At Horizontal Angle = 90, Vertical Angle = 15
 # 1 - Vertical Plane Through Horizontal Angles (90 - 270) (Through Max. Cd.)
 # 2 - Horizontal Plane Through Vertical Angle (15) (Through Max. Cd.)

TECHNICAL INFORMATION

Fixture housing, lamp holder brackets, end sections, and channel cover are constructed of heavy gauge die-formed steel. ETL listed. Suitable for damp locations. Ballasts are solid state electronic. Ballasts and lamp holders are replaceable without removing from ceiling. Can be mounted as single fixture or in a continuous row. All reflective surfaces are finished with a high reflectance, lighting fixture white polyester powder.